

PRE-CHECK

To make the vehicle be in the initialized condition.

Initialized condition is the condition when the following conditions are satisfied.

- (1) Key plate has not been inserted in the ignition key cylinder.
- (2) All the doors are closed. (Door warning light is off.)
- (3) All the doors are locked.



Basic function check

With a standard operation, when repeating the operations of UNLOCK switch and LOCK switch three times or more alternately, check the operation of UNLOCK – LOCK from 3rd time onward.

- Following procedures are standard operation.

- (1) Keep away approx. 1 M to the right direction from the outside handle of a driver's seat.
- (2) Point the transmitter toward the vehicle and press either of transmitter switches for about 1 sec.

<Reference>

As of the security function, even the wireless function is normal, there may be the case that only UNLOCK operation will not work.

No



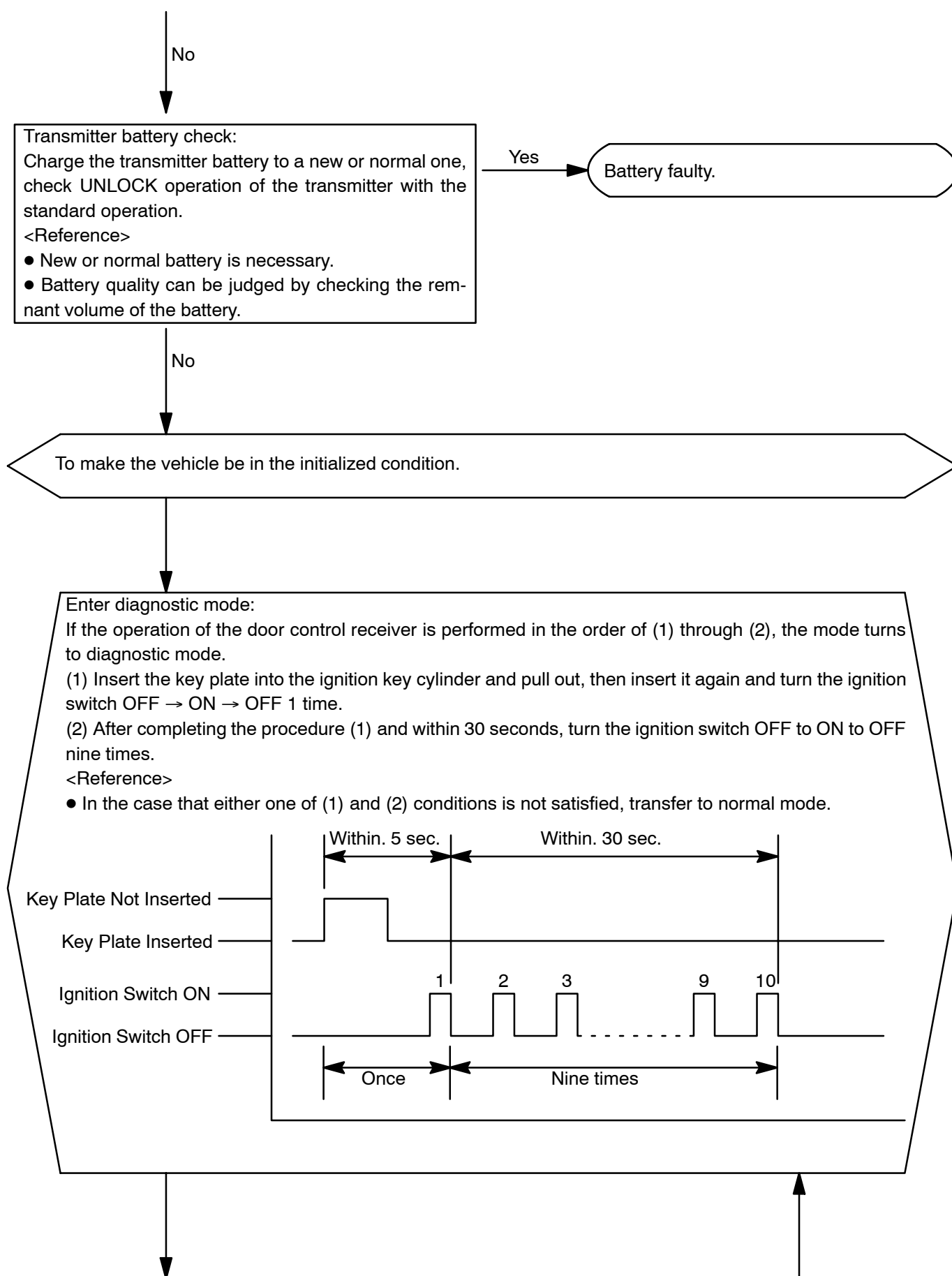
Yes

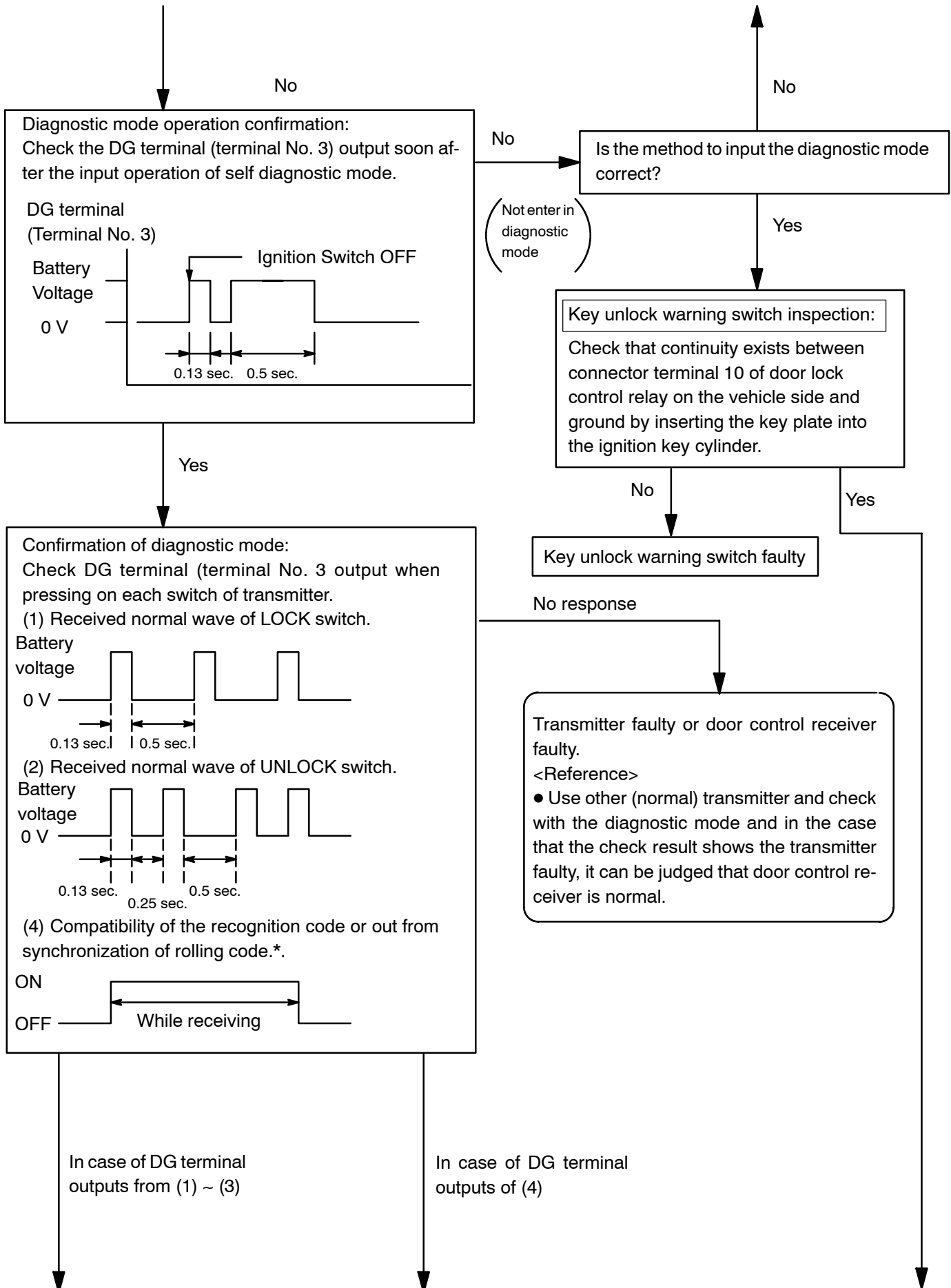


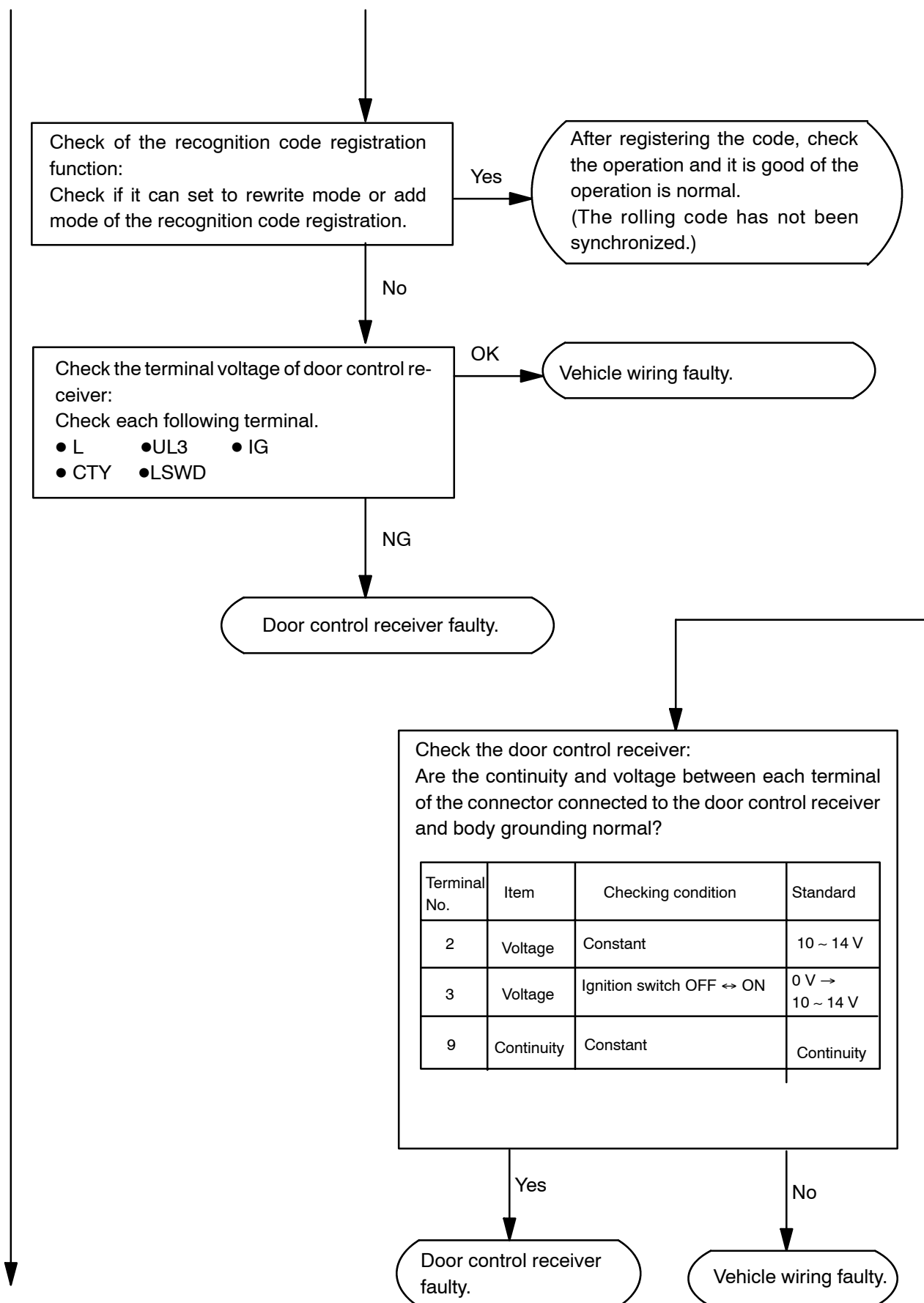
Normal

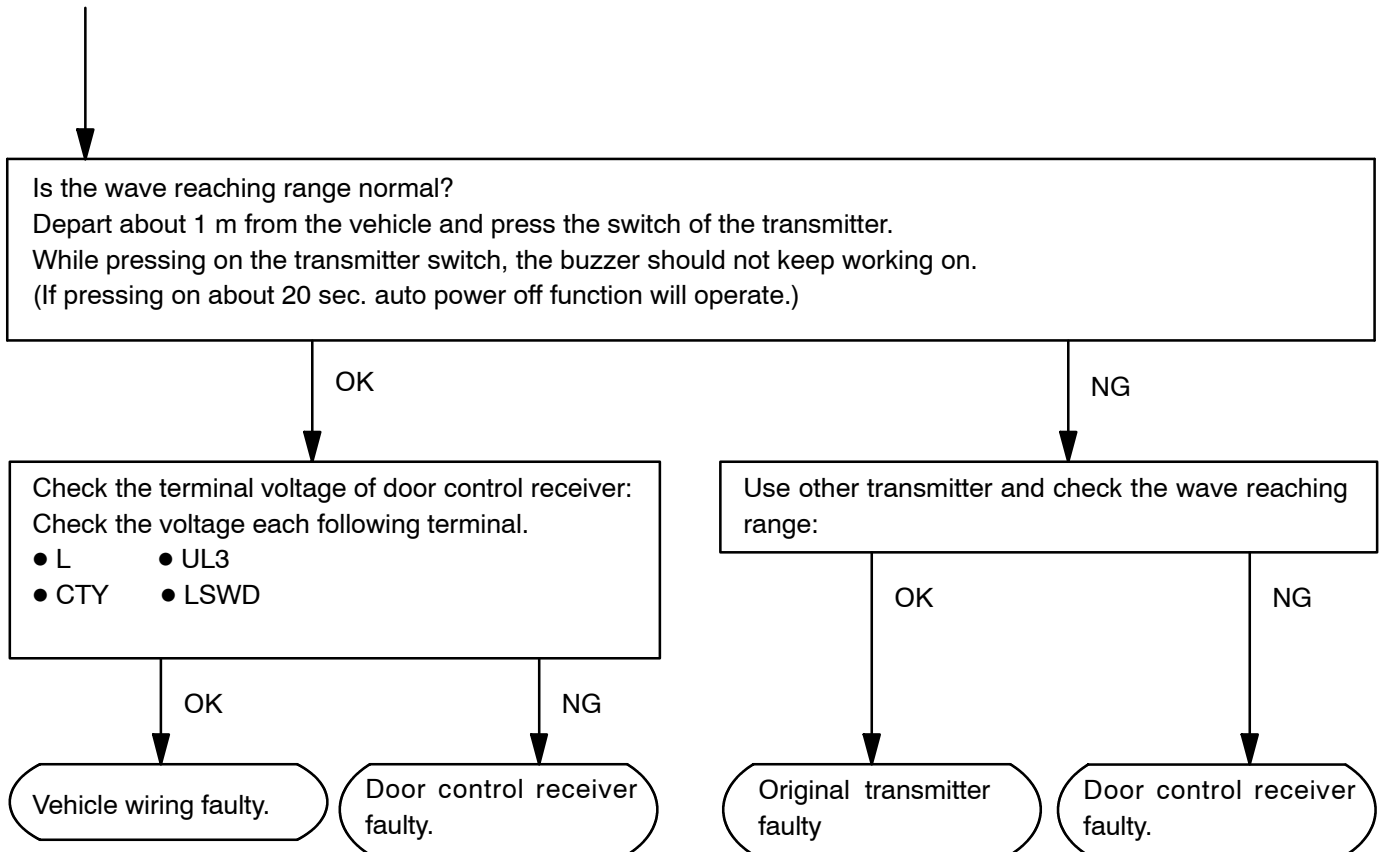
<Reference>

- Operative distance may differ depending on the operator, the way of holding or the position.
- Because of the use of weak electric wave, in case of strong wave or noise in the frequency used, there may be the case that operative distance gets shorter.







**HINT:**

The rolling code is the code changing at each time when the wave is transmitted from the transmitter and changing when the wave is synchronized between transmitter side and door control receiver side.

When the rolling code is not synchronized between the transmitter and door control receiver, a symptom of "Only LOCK operation is available." appears.

In this case, it goes back to normal by synchronizing the rolling code.

(The method to synchronize it is the same as of the registration of the recognition code.)